

**Customer:** Discover CBD  
**Address:** 2255 Reliable Cir  
Colorado Springs, CO 80906  
**Sample ID:** TIN-1124 900mg Unflavored WS  
**Matrix:** Tincture  
**Labnumber:** 22L0108-01

Density (g/mL): 1.2392

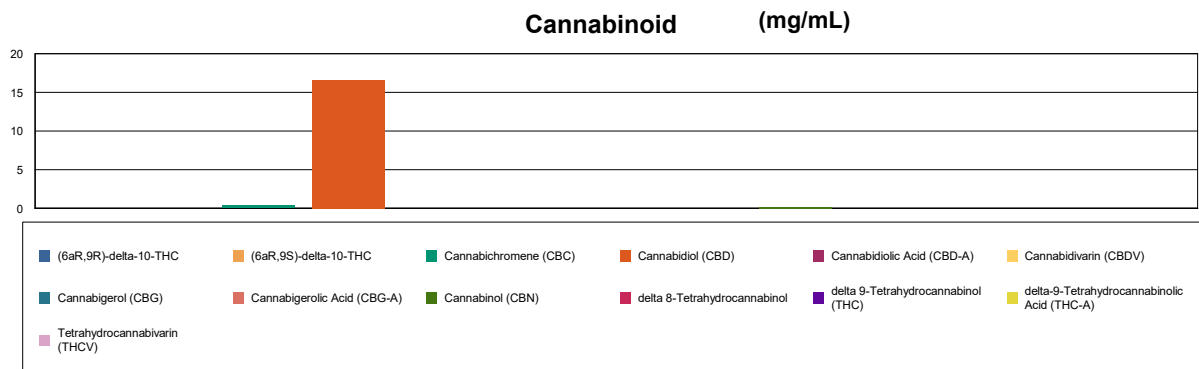
## Cannabinoid Profile

**Test Conditions:** 16°C  
**Extraction Technician:** SH  
**Analytical Chemist:** SH

Extraction Date(s)	Analysis Date(s)
12/27/2022	12/29/2022

Cannabinoids (HPLC)	Results		
	LOD (mg/mL)	%	mg/mL
Cannabidivarin (CBDV)	<0.20		
Cannabidiolic Acid (CBD-A)	<0.20		
Cannabigerolic Acid (CBG-A)	<0.20		
Cannabigerol (CBG)	<0.20		
Cannabidiol (CBD)		1.66	16.6
Tetrahydrocannabivarin (THCV)	<0.20		
Cannabinol (CBN)		0.02	0.174
Cannabichromene (CBC)		0.04	0.379
delta 9-Tetrahydrocannabinol (THC)	<0.50		
delta-9-Tetrahydrocannabinolic Acid (THC-A)	<0.50		
delta 8-Tetrahydrocannabinol	<0.50		
(6aR,9S)-delta-10-THC	<0.50		
(6aR,9R)-delta-10-THC	<0.50		
<b>Cannabinoids Total</b>		<b>%</b>	<b>mg/mL</b>
Max Active THC (delta-9-tetrahydrocannabinol)		<0.05	<0.50
Max Active CBD		1.66	16.60
Total Cannabinoids		1.72	17.20

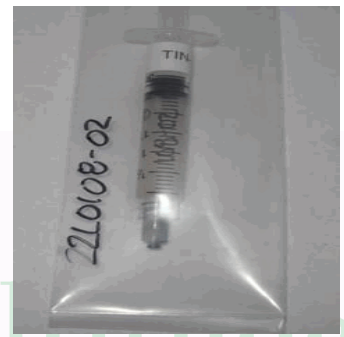
Following USDA guidelines on uncertainty, Altitude Consulting's uncertainty is calculated to be +/- 3% for all cannabinoids using a coverage factor of 2 (95% confidence interval). Measurement uncertainty has not been factored into reported values. Blank results indicate the compound was below the limit of detection.



**Gary Brook - Laboratory Director - 12/29/2022**

Reporting Limits will vary based on sample extraction weight used for the analysis.

The results of this report are based solely on the sample submitted and cannot be reproduced. Decision Rule: Measurement uncertainty is not accounted for in the reported values. Results are based solely on calculated numbers. Altitude Consulting makes no Statements of conformity. Pesticide, metal, and microbial analyses are subcontracted to ISO 17025 laboratories.



**Customer:** Discover CBD  
**Address:** 2255 Reliable Cir  
Colorado Springs, CO 80906  
**Sample ID:** TIN-1125 900mg Berry WS  
**Matrix:** Tincture  
**Labnumber:** 22L0108-02

Density (g/mL): 1.2392

## Cannabinoid Profile

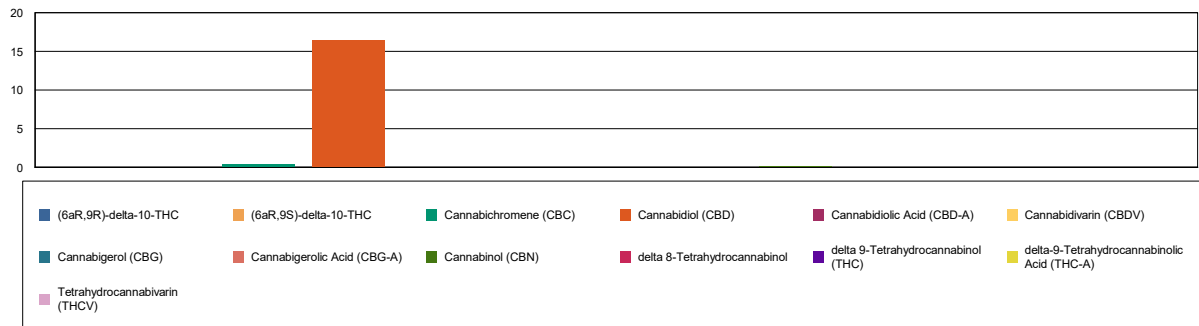
**Test Conditions:** 16°C  
**Extraction Technician:** SH  
**Analytical Chemist:** SH

Extraction Date(s)	Analysis Date(s)
12/27/2022	12/29/2022

Cannabinoids (HPLC)	Results		
	LOD (mg/mL)	%	mg/mL
Cannabidivarin (CBDV)	<0.20		
Cannabidiolic Acid (CBD-A)	<0.20		
Cannabigerolic Acid (CBG-A)	<0.20		
Cannabigerol (CBG)	<0.20		
Cannabidiol (CBD)		1.64	16.4
Tetrahydrocannabivarin (THCV)	<0.20		
Cannabinol (CBN)		0.02	0.152
Cannabichromene (CBC)		0.04	0.376
delta 9-Tetrahydrocannabinol (THC)	<0.40		
delta-9-Tetrahydrocannabinolic Acid (THC-A)	<0.40		
delta 8-Tetrahydrocannabinol	<0.40		
(6aR,9S)-delta-10-THC	<0.40		
(6aR,9R)-delta-10-THC	<0.40		
Cannabinoids Total		%	mg/mL
Max Active THC (delta-9-tetrahydrocannabinol)		<0.04	<0.40
Max Active CBD		1.64	16.40
Total Cannabinoids		1.69	16.90

Following USDA guidelines on uncertainty, Altitude Consulting's uncertainty is calculated to be +/- 3% for all cannabinoids using a coverage factor of 2 (95% confidence interval). Measurement uncertainty has not been factored into reported values. Blank results indicate the compound was below the limit of detection.

**Cannabinoid (mg/mL)**



**Gary Brook - Laboratory Director - 12/29/2022**

Reporting Limits will vary based on sample extraction weight used for the analysis.

The results of this report are based solely on the sample submitted and cannot be reproduced. Decision Rule: Measurement uncertainty is not accounted for in the reported values. Results are based solely on calculated numbers. Altitude Consulting makes no Statements of conformity. Pesticide, metal, and microbial analyses are subcontracted to ISO 17025 laboratories.



**Customer:** Discover CBD  
**Address:** 2255 Reliable Cir  
Colorado Springs, CO 80906  
**Sample ID:** MCT-1075 1000mg Pineapple  
**Matrix:** Tincture  
**Labnumber:** 22L0108-03

Total mass or volume per unit (g or mL): 30

Density (g/mL): 0.9635

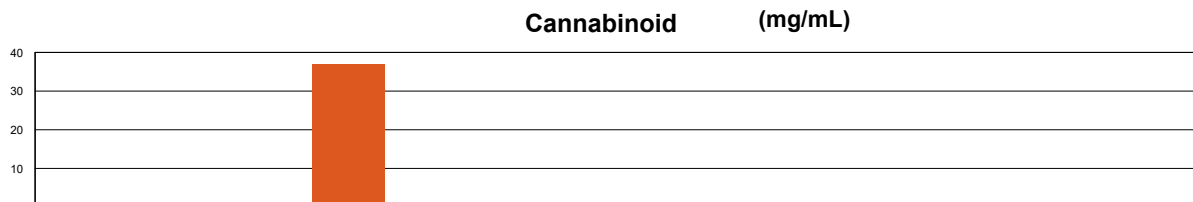
## Cannabinoid Profile

**Test Conditions:** 16°C  
**Extraction Technician:** SH  
**Analytical Chemist:** SH

Extraction Date(s)	Analysis Date(s)
12/27/2022	12/29/2022

Cannabinoids (HPLC)	Results			
	LOD (mg/mL)	%	mg/mL	mg/Bottle
Cannabidiol (CBD)	<0.20	3.70	37.0	1110
Tetrahydrocannabivarin (THCV)	<0.20			
Cannabinol (CBN)	<0.20			
Cannabichromene (CBC)	<0.20			
delta 9-Tetrahydrocannabinol (THC)	<0.40			
delta-9-Tetrahydrocannabinolic Acid (THC-A)	<0.40			
delta 8-Tetrahydrocannabinol	<0.40			
(6aR,9S)-delta-10-THC	<0.40			
(6aR,9R)-delta-10-THC	<0.40			
<b>Cannabinoids Total</b>		<b>%</b>	<b>mg/mL</b>	
Max Active THC (delta-9-tetrahydrocannabinol)		<0.04	<0.40	
Max Active CBD		3.70	37.00	
Total Cannabinoids		3.70	37.00	

Following USDA guidelines on uncertainty, Altitude Consulting's uncertainty is calculated to be +/- 3% for all cannabinoids using a coverage factor of 2 (95% confidence interval). Measurement uncertainty has not been factored into reported values.  
Blank results indicate the compound was below the limit of detection.



(6aR,9R)-delta-10-THC	(6aR,9S)-delta-10-THC	Cannabichromene (CBC)	Cannabidiol (CBD)	Cannabidiolic Acid (CBD-A)	Cannabidiol (CBD)
Cannabigerol (CBG)	Cannabigerolic Acid (CBG-A)	Cannabinol (CBN)	delta 8-Tetrahydrocannabinol	delta 9-Tetrahydrocannabinol (THC)	delta 9-Tetrahydrocannabinolic Acid (THC-A)
Tetrahydrocannabivarin (THCV)					

**Gary Brook - Laboratory Director - 12/29/2022**

Reporting Limits will vary based on sample extraction weight used for the analysis.

The results of this report are based solely on the sample submitted and cannot be reproduced. Decision Rule: Measurement uncertainty is not accounted for in the reported values. Results are based solely on calculated numbers. Altitude Consulting makes no Statements of conformity. Pesticide, metal, and microbial analyses are subcontracted to ISO 17025 laboratories.



**Customer:** Discover CBD  
**Address:** 2255 Reliable Cir  
Colorado Springs, CO 80906  
**Sample ID:** MCT-1076 500mg Grape  
**Matrix:** Tincture  
**Labnumber:** 22L0108-04

Total mass or volume per unit (g or mL): 30

Density (g/mL): 0.9635

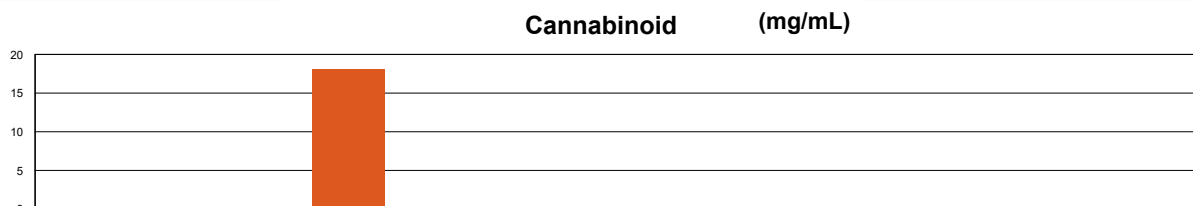
## Cannabinoid Profile

**Test Conditions:** 16°C  
**Extraction Technician:** SH  
**Analytical Chemist:** SH

Extraction Date(s)	Analysis Date(s)
12/27/2022	12/29/2022

Cannabinoids (HPLC)	Results			
	LOD (mg/mL)	%	mg/mL	mg/Bottle
Cannabidivarin (CBDV)	<0.20			
Cannabidiolic Acid (CBD-A)	<0.20			
Cannabigerolic Acid (CBG-A)	<0.20			
Cannabigerol (CBG)	<0.20			
Cannabidiol (CBD)		1.81	18.1	543
Tetrahydrocannabivarin (THCV)	<0.20			
Cannabinol (CBN)	<0.20			
Cannabichromene (CBC)	<0.20			
delta 9-Tetrahydrocannabinol (THC)	<0.40			
delta-9-Tetrahydrocannabinolic Acid (THC-A)	<0.40			
delta 8-Tetrahydrocannabinol	<0.40			
(6aR,9S)-delta-10-THC	<0.40			
(6aR,9R)-delta-10-THC	<0.40			
Cannabinoids Total		%	mg/mL	
Max Active THC (delta-9-tetrahydrocannabinol)		<0.04	<0.40	
Max Active CBD		1.81	18.10	
Total Cannabinoids		1.81	18.10	

Following USDA guidelines on uncertainty, Altitude Consulting's uncertainty is calculated to be +/- 3% for all cannabinoids using a coverage factor of 2 (95% confidence interval). Measurement uncertainty has not been factored into reported values.  
Blank results indicate the compound was below the limit of detection.



(6aR,9R)-delta-10-THC	(6aR,9S)-delta-10-THC	Cannabichromene (CBC)	Cannabidiol (CBD)	Cannabidiolic Acid (CBD-A)	Cannabidivarin (CBDV)
Cannabigerol (CBG)	Cannabigerolic Acid (CBG-A)	Cannabinol (CBN)	delta 8-Tetrahydrocannabinol	delta 9-Tetrahydrocannabinol (THC)	delta 9-Tetrahydrocannabinolic Acid (THC-A)
Tetrahydrocannabivarin (THCV)					

**Gary Brook - Laboratory Director - 12/29/2022**

Reporting Limits will vary based on sample extraction weight used for the analysis.

The results of this report are based solely on the sample submitted and cannot be reproduced. Decision Rule: Measurement uncertainty is not accounted for in the reported values. Results are based solely on calculated numbers. Altitude Consulting makes no Statements of conformity. Pesticide, metal, and microbial analyses are subcontracted to ISO 17025 laboratories.



**Customer:** Discover CBD  
**Address:** 2255 Reliable Cir  
Colorado Springs, CO 80906  
**Sample ID:** MCT-1077 1000mg Pineapple  
**Matrix:** Tincture  
**Labnumber:** 22L0108-05

Total mass or volume per unit (g or mL): 30

Density (g/mL): 0.9635

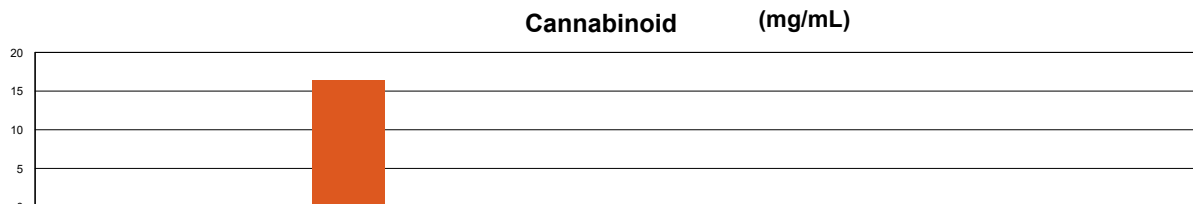
## Cannabinoid Profile

**Test Conditions:** 16°C  
**Extraction Technician:** SH  
**Analytical Chemist:** SH

Extraction Date(s)	Analysis Date(s)
12/27/2022	12/29/2022

Cannabinoids (HPLC)	Results			
	LOD (mg/mL)	%	mg/mL	mg/Bottle
Cannabidivarin (CBDV)	<0.10			
Cannabidiolic Acid (CBD-A)	<0.10			
Cannabigerolic Acid (CBG-A)	<0.10			
Cannabigerol (CBG)	<0.10			
Cannabidiol (CBD)		1.65	16.5	494
Tetrahydrocannabivarin (THCV)	<0.10			
Cannabinol (CBN)	<0.10			
Cannabichromene (CBC)	<0.10			
delta 9-Tetrahydrocannabinol (THC)	<0.30			
delta-9-Tetrahydrocannabinolic Acid (THC-A)	<0.30			
delta 8-Tetrahydrocannabinol	<0.30			
(6aR,9S)-delta-10-THC	<0.30			
(6aR,9R)-delta-10-THC	<0.30			
Cannabinoids Total		%	mg/mL	
Max Active THC (delta-9-tetrahydrocannabinol)		<0.03	<0.30	
Max Active CBD		1.65	16.50	
Total Cannabinoids		1.65	16.50	

Following USDA guidelines on uncertainty, Altitude Consulting's uncertainty is calculated to be +/- 3% for all cannabinoids using a coverage factor of 2 (95% confidence interval). Measurement uncertainty has not been factored into reported values.  
Blank results indicate the compound was below the limit of detection.



(6aR,9R)-delta-10-THC	(6aR,9S)-delta-10-THC	Cannabichromene (CBC)	Cannabidiol (CBD)	Cannabidiolic Acid (CBD-A)	Cannabidivarin (CBDV)
Cannabigerol (CBG)	Cannabigerolic Acid (CBG-A)	Cannabinol (CBN)	delta 8-Tetrahydrocannabinol	delta 9-Tetrahydrocannabinol (THC)	delta 9-Tetrahydrocannabinolic Acid (THC-A)
Tetrahydrocannabivarin (THCV)					

**Gary Brook - Laboratory Director - 12/29/2022**

Reporting Limits will vary based on sample extraction weight used for the analysis.

The results of this report are based solely on the sample submitted and cannot be reproduced. Decision Rule: Measurement uncertainty is not accounted for in the reported values. Results are based solely on calculated numbers. Altitude Consulting makes no Statements of conformity. **Pesticide, metal, and microbial analyses are subcontracted to ISO 17025 laboratories.**



**Customer:** Discover CBD  
**Address:** 2255 Reliable Cir  
Colorado Springs, CO 80906  
**Sample ID:** MCT-1078 1250mg Unflavored  
**Matrix:** Tincture  
**Labnumber:** 22L0108-06

Total mass or volume per unit (g or mL): 60

Density (g/mL): 0.9635

## Cannabinoid Profile

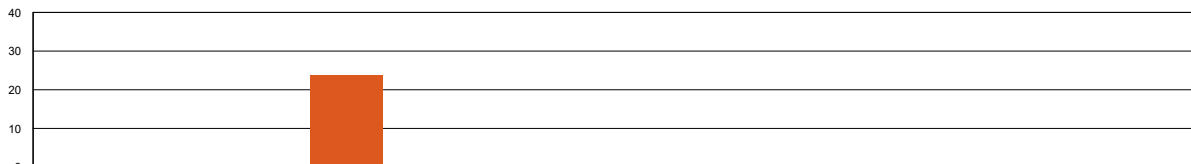
**Test Conditions:** 16°C  
**Extraction Technician:** SH  
**Analytical Chemist:** SH

Extraction Date(s)	Analysis Date(s)
12/27/2022	12/29/2022

Cannabinoids (HPLC)	Results			
	LOD (mg/mL)	%	mg/mL	mg/Bottle
Cannabidiol (CBD)	<0.20	2.38	23.8	1430
Tetrahydrocannabivarin (THCV)	<0.20			
Cannabinol (CBN)	<0.20			
Cannabichromene (CBC)	<0.20			
delta 9-Tetrahydrocannabinol (THC)	<0.30			
delta-9-Tetrahydrocannabinolic Acid (THC-A)	<0.30			
delta 8-Tetrahydrocannabinol	<0.30			
(6aR,9S)-delta-10-THC	<0.30			
(6aR,9R)-delta-10-THC	<0.30			
<b>Cannabinoids Total</b>		<b>%</b>	<b>mg/mL</b>	
Max Active THC (delta-9-tetrahydrocannabinol)		<0.03	<0.30	
Max Active CBD		2.38	23.80	
Total Cannabinoids		2.38	23.80	

Following USDA guidelines on uncertainty, Altitude Consulting's uncertainty is calculated to be +/- 3% for all cannabinoids using a coverage factor of 2 (95% confidence interval). Measurement uncertainty has not been factored into reported values.  
Blank results indicate the compound was below the limit of detection.

**Cannabinoid (mg/mL)**



(6aR,9R)-delta-10-THC	(6aR,9S)-delta-10-THC	Cannabichromene (CBC)	Cannabidiol (CBD)	Cannabidiolic Acid (CBD-A)	Cannabidivarin (CBDV)
Cannabigerol (CBG)	Cannabigerolic Acid (CBG-A)	Cannabinol (CBN)	delta 8-Tetrahydrocannabinol	delta 9-Tetrahydrocannabinol (THC)	delta 9-Tetrahydrocannabinolic Acid (THC-A)
Tetrahydrocannabivarin (THCV)					

**Gary Brook - Laboratory Director - 12/29/2022**

Reporting Limits will vary based on sample extraction weight used for the analysis.

The results of this report are based solely on the sample submitted and cannot be reproduced. Decision Rule: Measurement uncertainty is not accounted for in the reported values. Results are based solely on calculated numbers. Altitude Consulting makes no Statements of conformity. Pesticide, metal, and microbial analyses are subcontracted to ISO 17025 laboratories.





**Customer:** Discover CBD  
**Address:** 2255 Reliable Cir  
Colorado Springs, CO 80906

**Sample ID:** BB-1005 50mg Bath Bomb

**Matrix:** Topical

**Labnumber:** 22L0108-07 **Total mass or volume per unit (g or mL):** 153.8

## Cannabinoid Profile

**Test Conditions:** 16°C

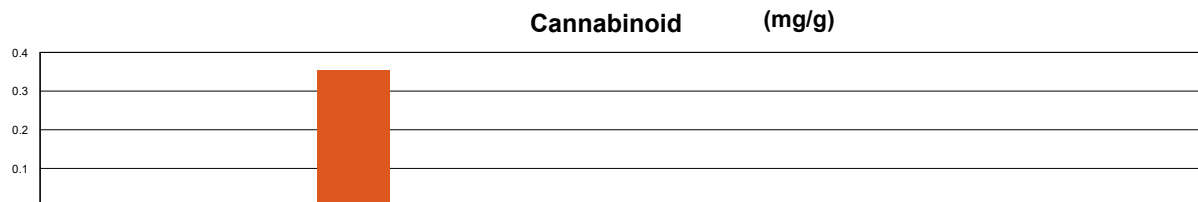
**Extraction Technician:** SH

**Analytical Chemist:** SH

Extraction Date(s)	Analysis Date(s)
12/27/2022	12/29/2022

Cannabinoids (HPLC)		Results		
	LOD (mg/g)	%	mg/g	mg/Bath Bomb
Cannabidiol (CBD)	<0.020	0.04	0.355	54.6
Cannabidiol (CBD)	<0.020			
Tetrahydrocannabivarin (THCV)	<0.020			
Cannabinol (CBN)	<0.020			
Cannabichromene (CBC)	<0.020			
delta 9-Tetrahydrocannabinol (THC)	<0.040			
delta-9-Tetrahydrocannabinolic Acid (THC-A)	<0.040			
delta 8-Tetrahydrocannabinol	<0.040			
(6aR,9S)-delta-10-THC	<0.040			
(6aR,9R)-delta-10-THC	<0.040			
<b>Cannabinoids Total</b>		<b>%</b>	<b>mg/g</b>	
Max Active THC (delta-9-tetrahydrocannabinol)		<0.004	<0.040	
Max Active CBD		0.04	0.36	
Total Cannabinoids		0.04	0.36	

Following USDA guidelines on uncertainty, Altitude Consulting's uncertainty is calculated to be +/- 3% for all cannabinoids using a coverage factor of 2 (95% confidence interval). Measurement uncertainty has not been factored into reported values.  
Blank results indicate the compound was below the limit of detection.



(6aR,9R)-delta-10-THC	(6aR,9S)-delta-10-THC	Cannabichromene (CBC)	Cannabidiol (CBD)	Cannabidiolic Acid (CBD-A)	Cannabidivarin (CBDV)
Cannabigerol (CBG)	Cannabigerolic Acid (CBG-A)	Cannabinol (CBN)	delta 8-Tetrahydrocannabinol	delta 9-Tetrahydrocannabinol (THC)	delta 9-Tetrahydrocannabinolic Acid (THC-A)
Tetrahydrocannabivarin (THCV)					

**Gary Brook - Laboratory Director - 12/29/2022**

Reporting Limits will vary based on sample extraction weight used for the analysis.

The results of this report are based solely on the sample submitted and cannot be reproduced. Decision Rule: Measurement uncertainty is not accounted for in the reported values.

Results are based solely on calculated numbers. Altitude Consulting makes no Statements of conformity. **Pesticide, metal, and microbial analyses are subcontracted to ISO 17025 laboratories.**







**Customer:** Discover CBD  
**Address:** 2255 Reliable Cir  
Colorado Springs, CO 80906

**Sample ID:** EJ-1044 Tropical Fusion E-Juice

**Matrix:** Tincture

**Labnumber:** 22L0108-09 **Total mass or volume per unit (g or mL):** 60

**Density (g/mL):** 1.1794

## Cannabinoid Profile

**Test Conditions:** 16°C

**Extraction Technician:** SH

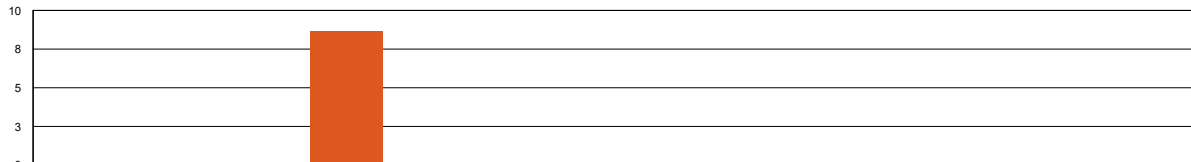
**Analytical Chemist:** SH

Extraction Date(s)	Analysis Date(s)
12/27/2022	12/29/2022

Cannabinoids (HPLC)	Results			
	LOD (mg/mL)	%	mg/mL	mg/Container
Cannabidiol (CBD)	<0.20	0.86	8.64	518
Cannabidiol (CBD)	<0.20			
Tetrahydrocannabivarin (THCV)	<0.20			
Cannabinol (CBN)	<0.20			
Cannabichromene (CBC)	<0.20			
delta 9-Tetrahydrocannabinol (THC)	<0.40			
delta-9-Tetrahydrocannabinolic Acid (THC-A)	<0.40			
delta 8-Tetrahydrocannabinol	<0.40			
(6aR,9S)-delta-10-THC	<0.40			
(6aR,9R)-delta-10-THC	<0.40			
<b>Cannabinoids Total</b>		<b>%</b>	<b>mg/mL</b>	
Max Active THC (delta-9-tetrahydrocannabinol)		<0.04	<0.40	
Max Active CBD		0.86	8.64	
Total Cannabinoids		0.86	8.64	

Following USDA guidelines on uncertainty, Altitude Consulting's uncertainty is calculated to be +/- 3% for all cannabinoids using a coverage factor of 2 (95% confidence interval). Measurement uncertainty has not been factored into reported values.  
Blank results indicate the compound was below the limit of detection.

**Cannabinoid (mg/mL)**



(6aR,9R)-delta-10-THC	(6aR,9S)-delta-10-THC	Cannabichromene (CBC)	Cannabidiol (CBD)	Cannabidiolic Acid (CBD-A)	Cannabidiol (CBD)
Cannabigerol (CBG)	Cannabigerolic Acid (CBG-A)	Cannabinol (CBN)	delta 8-Tetrahydrocannabinol	delta 9-Tetrahydrocannabinol (THC)	delta 9-Tetrahydrocannabinolic Acid (THC-A)
Tetrahydrocannabivarin (THCV)					

**Gary Brook - Laboratory Director - 12/29/2022**

Reporting Limits will vary based on sample extraction weight used for the analysis.

The results of this report are based solely on the sample submitted and cannot be reproduced. Decision Rule: Measurement uncertainty is not accounted for in the reported values.

Results are based solely on calculated numbers. Altitude Consulting makes no Statements of conformity. **Pesticide, metal, and microbial analyses are subcontracted to ISO 17025 laboratories.**



**Customer:** Discover CBD  
**Address:** 2255 Reliable Cir  
Colorado Springs, CO 80906  
**Sample ID:** EJ-1045 Levi's Watermelon  
**Matrix:** Tincture  
**Labnumber:** 22L0108-10

Total mass or volume per unit (g or mL): 60

Density (g/mL): 1.1794

## Cannabinoid Profile

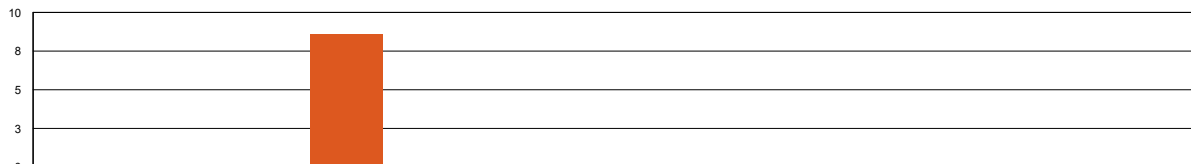
**Test Conditions:** 16°C  
**Extraction Technician:** SH  
**Analytical Chemist:** SH

Extraction Date(s)	Analysis Date(s)
12/27/2022	12/29/2022

Cannabinoids (HPLC)	Results			
	LOD (mg/mL)	%	mg/mL	mg/Container
Cannabidiol (CBD)	<0.20	0.86	8.61	516
Tetrahydrocannabivarin (THCV)	<0.20			
Cannabinol (CBN)	<0.20			
Cannabichromene (CBC)	<0.20			
delta 9-Tetrahydrocannabinol (THC)	<0.40			
delta-9-Tetrahydrocannabinolic Acid (THC-A)	<0.40			
delta 8-Tetrahydrocannabinol	<0.40			
(6aR,9S)-delta-10-THC	<0.40			
(6aR,9R)-delta-10-THC	<0.40			
<b>Cannabinoids Total</b>		<b>%</b>	<b>mg/mL</b>	
Max Active THC (delta-9-tetrahydrocannabinol)		<0.04	<0.40	
Max Active CBD		0.86	8.61	
Total Cannabinoids		0.86	8.61	

Following USDA guidelines on uncertainty, Altitude Consulting's uncertainty is calculated to be +/- 3% for all cannabinoids using a coverage factor of 2 (95% confidence interval). Measurement uncertainty has not been factored into reported values.  
Blank results indicate the compound was below the limit of detection.

**Cannabinoid (mg/mL)**

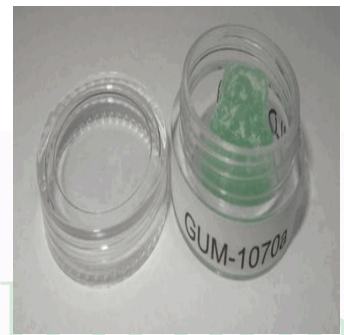


(6aR,9R)-delta-10-THC	(6aR,9S)-delta-10-THC	Cannabichromene (CBC)	Cannabidiol (CBD)	Cannabidiolic Acid (CBD-A)	Cannabidiol (CBD)
Cannabigerol (CBG)	Cannabigerolic Acid (CBG-A)	Cannabinol (CBN)	delta 8-Tetrahydrocannabinol	delta 9-Tetrahydrocannabinol (THC)	delta 9-Tetrahydrocannabinolic Acid (THC-A)
Tetrahydrocannabivarin (THCV)					

**Gary Brook - Laboratory Director - 12/29/2022**

Reporting Limits will vary based on sample extraction weight used for the analysis.

The results of this report are based solely on the sample submitted and cannot be reproduced. Decision Rule: Measurement uncertainty is not accounted for in the reported values. Results are based solely on calculated numbers. Altitude Consulting makes no Statements of conformity. Pesticide, metal, and microbial analyses are subcontracted to ISO 17025 laboratories.



**Customer:** Discover CBD  
**Address:** 2255 Reliable Cir  
Colorado Springs, CO 80906  
**Sample ID:** GUM-1070a 15mg Gummy  
**Matrix:** Edible  
**Labnumber:** 22L0108-11 Total mass or volume per unit (g or mL): 3.7591

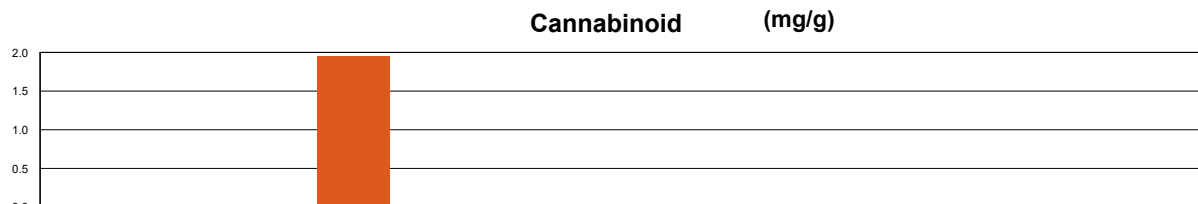
## Cannabinoid Profile

**Test Conditions:** 16°C  
**Extraction Technician:** SH  
**Analytical Chemist:** SH

Extraction Date(s)	Analysis Date(s)
12/27/2022	12/29/2022

Cannabinoids (HPLC)	Results			
	LOD (mg/g)	%	mg/g	mg/Gummy
Cannabidiol (CBD)	<0.003	0.19	1.95	7.33
Tetrahydrocannabivarin (THCV)	<0.003			
Cannabinol (CBN)	<0.003			
Cannabichromene (CBC)	<0.003			
delta 9-Tetrahydrocannabinol (THC)	<0.005			
delta-9-Tetrahydrocannabinolic Acid (THC-A)	<0.005			
delta 8-Tetrahydrocannabinol	<0.005			
(6aR,9S)-delta-10-THC	<0.005			
(6aR,9R)-delta-10-THC	<0.005			
<b>Cannabinoids Total</b>		<b>%</b>	<b>mg/g</b>	
Max Active THC (delta-9-tetrahydrocannabinol)		<0.0005	<0.005	
Max Active CBD		0.20	1.95	
Total Cannabinoids		0.20	1.95	

Following USDA guidelines on uncertainty, Altitude Consulting's uncertainty is calculated to be +/- 3% for all cannabinoids using a coverage factor of 2 (95% confidence interval). Measurement uncertainty has not been factored into reported values.  
Blank results indicate the compound was below the limit of detection.

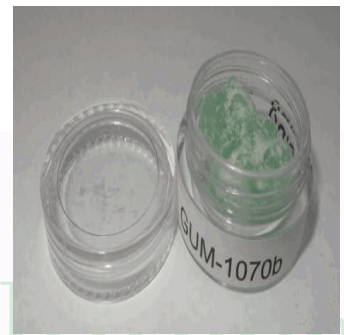


(6aR,9R)-delta-10-THC	(6aR,9S)-delta-10-THC	Cannabichromene (CBC)	Cannabidiol (CBD)	Cannabidiolic Acid (CBD-A)	Cannabidiol (CBD)
Cannabigerol (CBG)	Cannabigerolic Acid (CBG-A)	Cannabinol (CBN)	delta 8-Tetrahydrocannabinol	delta 9-Tetrahydrocannabinol (THC)	delta 9-Tetrahydrocannabinolic Acid (THC-A)
Tetrahydrocannabivarin (THCV)					

**Gary Brook - Laboratory Director - 12/29/2022**

Reporting Limits will vary based on sample extraction weight used for the analysis.

The results of this report are based solely on the sample submitted and cannot be reproduced. Decision Rule: Measurement uncertainty is not accounted for in the reported values. Results are based solely on calculated numbers. Altitude Consulting makes no Statements of conformity. Pesticide, metal, and microbial analyses are subcontracted to ISO 17025 laboratories.



**Customer:** Discover CBD  
**Address:** 2255 Reliable Cir  
Colorado Springs, CO 80906  
**Sample ID:** GUM-1070b 15mg Gummy  
**Matrix:** Edible  
**Labnumber:** 22L0108-12 Total mass or volume per unit (g or mL): 3.870

## Cannabinoid Profile

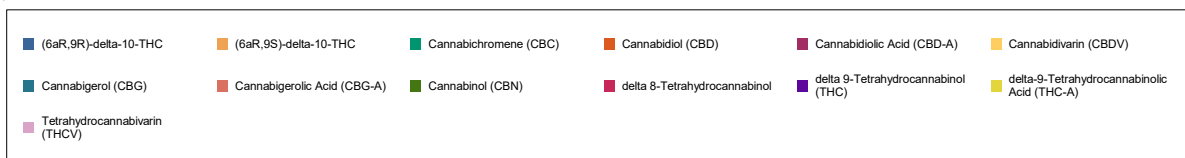
**Test Conditions:** 16°C  
**Extraction Technician:** SH  
**Analytical Chemist:** SH

Extraction Date(s)	Analysis Date(s)
12/27/2022	12/29/2022

Cannabinoids (HPLC)	Results			
	LOD (mg/g)	%	mg/g	mg/Gummy
Cannabidiol (CBD)	<0.003	0.45	4.48	17.3
Tetrahydrocannabivarin (THCV)	<0.003			
Cannabinol (CBN)	<0.003			
Cannabichromene (CBC)	<0.003			
delta 9-Tetrahydrocannabinol (THC)	<0.005			
delta-9-Tetrahydrocannabinolic Acid (THC-A)	<0.005			
delta 8-Tetrahydrocannabinol	<0.005			
(6aR,9S)-delta-10-THC	<0.005			
(6aR,9R)-delta-10-THC	<0.005			
Cannabinoids Total		%	mg/g	
Max Active THC (delta-9-tetrahydrocannabinol)		<0.0005	<0.005	
Max Active CBD		0.45	4.48	
Total Cannabinoids		0.45	4.48	

Following USDA guidelines on uncertainty, Altitude Consulting's uncertainty is calculated to be +/- 3% for all cannabinoids using a coverage factor of 2 (95% confidence interval). Measurement uncertainty has not been factored into reported values.  
Blank results indicate the compound was below the limit of detection.

**Cannabinoid (mg/g)**




**Gary Brook - Laboratory Director - 12/29/2022**

Reporting Limits will vary based on sample extraction weight used for the analysis.

The results of this report are based solely on the sample submitted and cannot be reproduced. Decision Rule: Measurement uncertainty is not accounted for in the reported values. Results are based solely on calculated numbers. Altitude Consulting makes no Statements of conformity. Pesticide, metal, and microbial analyses are subcontracted to ISO 17025 laboratories.



**Customer:** Discover CBD  
**Address:** 2255 Reliable Cir  
Colorado Springs, CO 80906  
**Sample ID:** GUM-1073a 25mg Gummy  
**Matrix:** Edible  
**Labnumber:** 22L0108-13 Total mass or volume per unit (g or mL): 3.7787

## Cannabinoid Profile

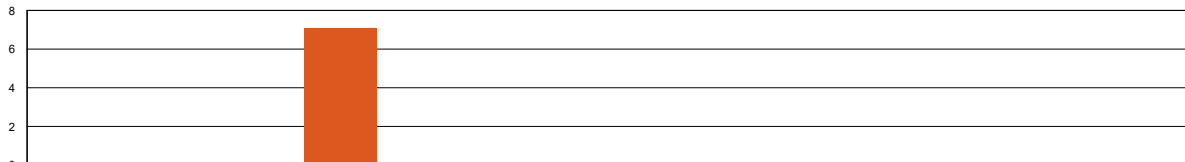
**Test Conditions:** 16°C  
**Extraction Technician:** SH  
**Analytical Chemist:** SH

Extraction Date(s)	Analysis Date(s)
12/27/2022	12/29/2022

Cannabinoids (HPLC)	Results			
	LOD (mg/g)	%	mg/g	mg/Gummy
Cannabidiol (CBD)	<0.003	0.71	7.06	26.7
Cannabidiol (CBD)	<0.003			
Tetrahydrocannabivarin (THCV)	<0.003			
Cannabinol (CBN)	<0.003			
Cannabichromene (CBC)	<0.003			
delta 9-Tetrahydrocannabinol (THC)	<0.005			
delta-9-Tetrahydrocannabinolic Acid (THC-A)	<0.005			
delta 8-Tetrahydrocannabinol	<0.005			
(6aR,9S)-delta-10-THC	<0.005			
(6aR,9R)-delta-10-THC	<0.005			
<b>Cannabinoids Total</b>		<b>%</b>	<b>mg/g</b>	
Max Active THC (delta-9-tetrahydrocannabinol)		<0.0005	<0.005	
Max Active CBD		0.71	7.06	
Total Cannabinoids		0.71	7.06	

Following USDA guidelines on uncertainty, Altitude Consulting's uncertainty is calculated to be +/- 3% for all cannabinoids using a coverage factor of 2 (95% confidence interval). Measurement uncertainty has not been factored into reported values.  
Blank results indicate the compound was below the limit of detection.

**Cannabinoid (mg/g)**



(6aR,9R)-delta-10-THC	(6aR,9S)-delta-10-THC	Cannabichromene (CBC)	Cannabidiol (CBD)	Cannabidiolic Acid (CBD-A)	Cannabidiol (CBD)
Cannabigerol (CBG)	Cannabigerolic Acid (CBG-A)	Cannabinol (CBN)	delta 8-Tetrahydrocannabinol	delta 9-Tetrahydrocannabinol (THC)	delta 9-Tetrahydrocannabinolic Acid (THC-A)
Tetrahydrocannabivarin (THCV)					

**Gary Brook - Laboratory Director - 12/29/2022**

Reporting Limits will vary based on sample extraction weight used for the analysis.

The results of this report are based solely on the sample submitted and cannot be reproduced. Decision Rule: Measurement uncertainty is not accounted for in the reported values. Results are based solely on calculated numbers. Altitude Consulting makes no Statements of conformity. Pesticide, metal, and microbial analyses are subcontracted to ISO 17025 laboratories.





