



Customer: Discover CBD
Address: 2255 Reliable Cir.
Colorado Springs, CO 80906

Sample ID: TIN-1100 900mg Full Spectrum CBD Water Soluble Tincture
Matrix: Tincture
Labnumber: 21G0171-01

Density (g/mL): 1.2395

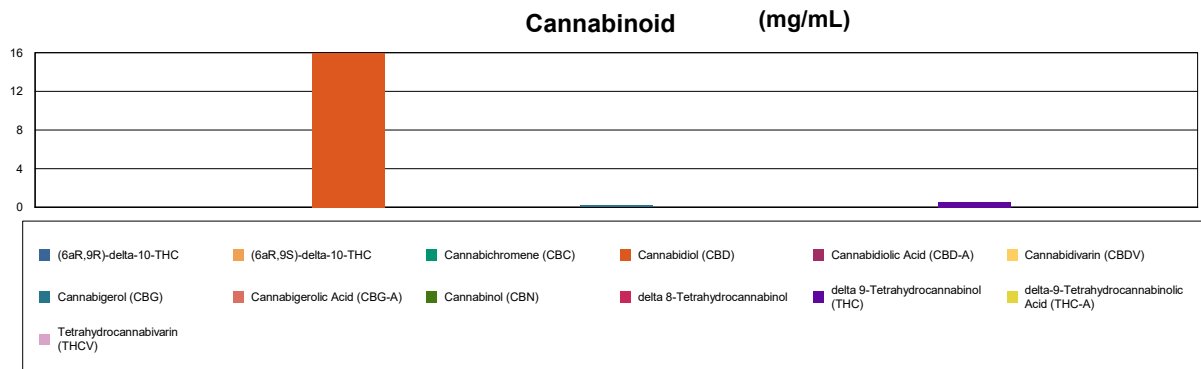
Cannabinoid Profile

Test Conditions: 23°C
Extraction Technician: SH
Analytical Chemist: CB

| Extraction Date(s) | Analysis Date(s) |
|--------------------|------------------|
| 7/23/2021 | 7/23/2021 |

| Cannabinoids (HPLC) | | Results | |
|---|-------------|----------|--------------|
| | LOD (mg/mL) | % | mg/mL |
| Cannabidivarin (CBDV) | <0.20 | | |
| Cannabidiolic Acid (CBD-A) | <0.20 | | |
| Cannabigerolic Acid (CBG-A) | <0.20 | | |
| Cannabigerol (CBG) | | 0.02 | 0.204 |
| Cannabidiol (CBD) | | 1.60 | 16.0 |
| Tetrahydrocannabivarin (THCV) | <0.20 | | |
| Cannabinol (CBN) | <0.20 | | |
| Cannabichromene (CBC) | <0.20 | | |
| delta 9-Tetrahydrocannabinol (THC) | | 0.06 | 0.572 |
| delta-9-Tetrahydrocannabinolic Acid (THC-A) | <0.20 | | |
| delta 8-Tetrahydrocannabinol | <0.20 | | |
| (6aR,9S)-delta-10-THC | <0.20 | | |
| (6aR,9R)-delta-10-THC | <0.20 | | |
| Cannabinoids Total | | % | mg/mL |
| Max Active THC (delta-9-tetrahydrocannabinol) | | 0.06 | 0.57 |
| Max Active CBD | | 1.60 | 16.00 |
| T.Active Cannabinoids | | 1.68 | 16.80 |
| Total Cannabinoids | | 1.68 | 16.80 |

Following USDA guidelines on uncertainty, Altitude Consulting's uncertainty is calculated to be +/- 2% for all cannabinoids using a coverage factor of 2 (95% confidence interval). Measurement uncertainty has not been factored into reported values.
Blank results indicate the compound was below the limit of detection.




Gary Brook - Laboratory Director - 7/25/2021

Reporting Limits will vary based on sample extraction weight used for the analysis.

The results of this report are based solely on the sample submitted and cannot be reproduced. Decision Rule: Measurement uncertainty is not accounted for in the reported values. Results are based solely on calculated numbers. Altitude Consulting makes no Statements of conformity. **Pesticide, metal, and microbial analyses are subcontracted to ISO 17025 laboratories.**