



**Customer:** Discover CBD  
**Address:** 2255 Reliable Cir  
Colorado Springs, CO 80906  
**Sample ID:** GO - 1021 250mg CBD Gold Oil  
**Matrix:** Concentrates  
**Labnumber:** 21L0052-01

Total mass or volume per unit (g or mL): 1

Density (g/mL): .998

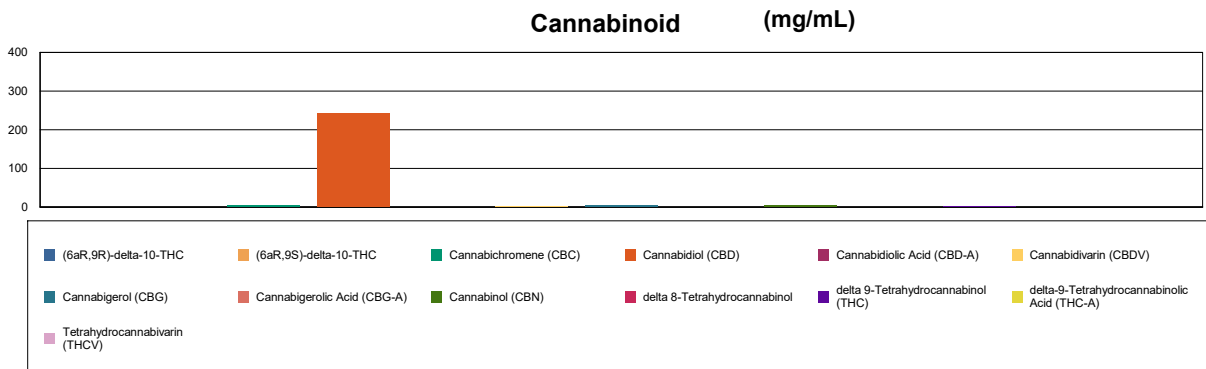
## Cannabinoid Profile

**Test Conditions:** 17°C  
**Extraction Technician:** SH  
**Analytical Chemist:** SH

Extraction Date(s)	Analysis Date(s)
12/8/2021	12/8/2021

Cannabinoids (HPLC)		Results		
	LOD (mg/mL)	%	mg/mL	mg/Syringe
Cannabidiol (CBD)		24.16	242	242
Cannabidiol (CBD)		24.16	242	242
Tetrahydrocannabivarin (THCV)	<0.20			
Cannabinol (CBN)		0.42	4.17	4.17
Cannabichromene (CBC)		0.50	4.97	4.97
delta 9-Tetrahydrocannabinol (THC)		0.06	0.574	0.574
delta-9-Tetrahydrocannabinolic Acid (THC-A)	<0.30			
delta 8-Tetrahydrocannabinol	<0.30			
(6aR,9S)-delta-10-THC	<0.30			
(6aR,9R)-delta-10-THC	<0.30			
Cannabinoids Total		%	mg/mL	
Max Active THC (delta-9-tetrahydrocannabinol)		0.06	0.57	
Max Active CBD		24.20	242.00	
T.Active Cannabinoids		25.40	254.00	
Total Cannabinoids		25.60	256.00	

Following USDA guidelines on uncertainty, Altitude Consulting's uncertainty is calculated to be +/- 2% for all cannabinoids using a coverage factor of 2 (95% confidence interval). Measurement uncertainty has not been factored into reported values.  
Blank results indicate the compound was below the limit of detection.




**Gary Brook - Laboratory Director - 12/9/2021**

Reporting Limits will vary based on sample extraction weight used for the analysis.

The results of this report are based solely on the sample submitted and cannot be reproduced. Decision Rule: Measurement uncertainty is not accounted for in the reported values. Results are based solely on calculated numbers. Altitude Consulting makes no Statements of conformity. **Pesticide, metal, and microbial analyses are subcontracted to ISO 17025 laboratories.**