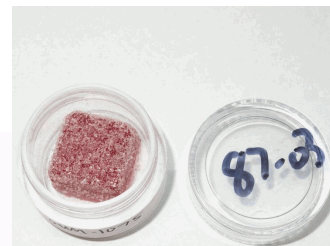


Customer: Discover CBD
Address: 2255 Reliable Cir
Colorado Springs, CO 80906

Sample ID: GUM-1075 D9 THC Infused Gummy

Matrix: Edible

Labnumber: 23A0087-03 **Total mass or volume per unit (g or mL):** 3.3498



Cannabinoid Profile

Test Conditions: 17°C

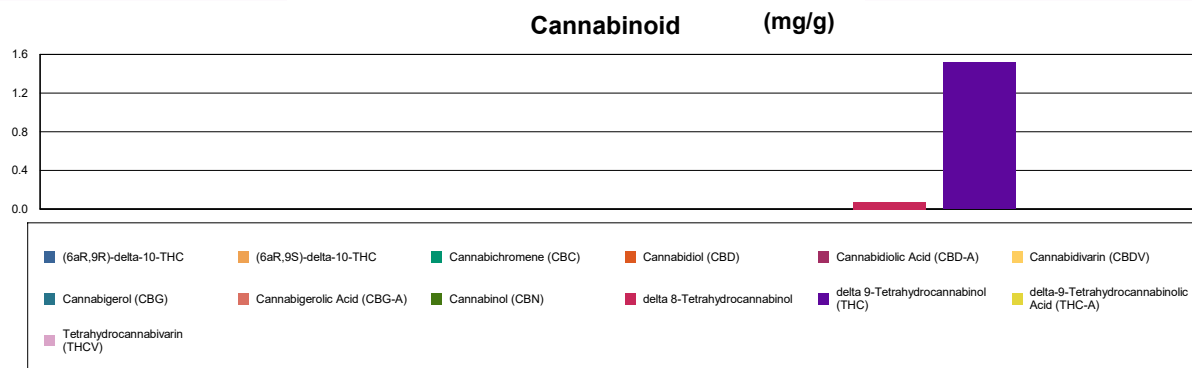
Extraction Technician: SH

Analytical Chemist: SH

Extraction Date(s)	Analysis Date(s)
1/23/2023	1/23/2023

Cannabinoids (HPLC)		Results		
	LOD (mg/g)	%	mg/g	mg/Gummy
Cannabidiol (CBD)	<0.040			
Cannabidiolol Acid (CBD-A)	<0.040			
Cannabigerolol Acid (CBG-A)	<0.040			
Cannabigerol (CBG)	<0.040			
Cannabidiol (CBD)	<0.040			
Tetrahydrocannabivarin (THCV)	<0.040			
Cannabinol (CBN)	<0.040			
Cannabichromene (CBC)	<0.040			
delta 9-Tetrahydrocannabinol (THC)		0.15	1.52	5.09
delta-9-Tetrahydrocannabinolol Acid (THC-A)	<0.070			
delta 8-Tetrahydrocannabinol		0.007	0.074	0.248
(6aR,9S)-delta-10-THC	<0.070			
(6aR,9R)-delta-10-THC	<0.070			
Cannabinoids Total		%	mg/g	
Max Active THC (delta-9-tetrahydrocannabinol)		0.15	1.52	
Max Active CBD		<0.004	<0.040	
Total Cannabinoids		0.16	1.59	

Following USDA guidelines on uncertainty, Altitude Consulting's uncertainty is calculated to be +/- 3% for all cannabinoids using a coverage factor of 2 (95% confidence interval). Measurement uncertainty has not been factored into reported values.
Blank results indicate the compound was below the limit of detection.



Gary Brook - Laboratory Director - 1/24/2023

Reporting Limits will vary based on sample extraction weight used for the analysis.

The results of this report are based solely on the sample submitted and cannot be reproduced. Decision Rule: Measurement uncertainty is not accounted for in the reported values. Results are based solely on calculated numbers. Altitude Consulting makes no Statements of conformity. **Pesticide, metal, and microbial analyses are subcontracted to ISO 17025 laboratories.**